



CERTIFICATIONS:



INDUSTRY 4.0

G2 provides a complete solution to control dangerous areas within **Industry 4.0** revolution. A fully integrated alarm and safeties control panel system, which runs and controls all the alarms that may occur.

In particularly complex industrial installations, which must satisfy high safety standard, it is necessary a fail-safe automation system, for the integrated detection of alarms in high deflagration risk processes.

The **alarm electrical panel**, designed by G2, uses with **DC UPS** modules. They avoid costly system shutdowns if there is an unexpected power.

Benefits

- One controller for both standard and safety automation;



- Better system integration;
- The logic of the safety functions is based on the software and is not longer wired;
- the software solution can be easily reproduced;
- Rapid detection of faults thanks to better diagnostics.

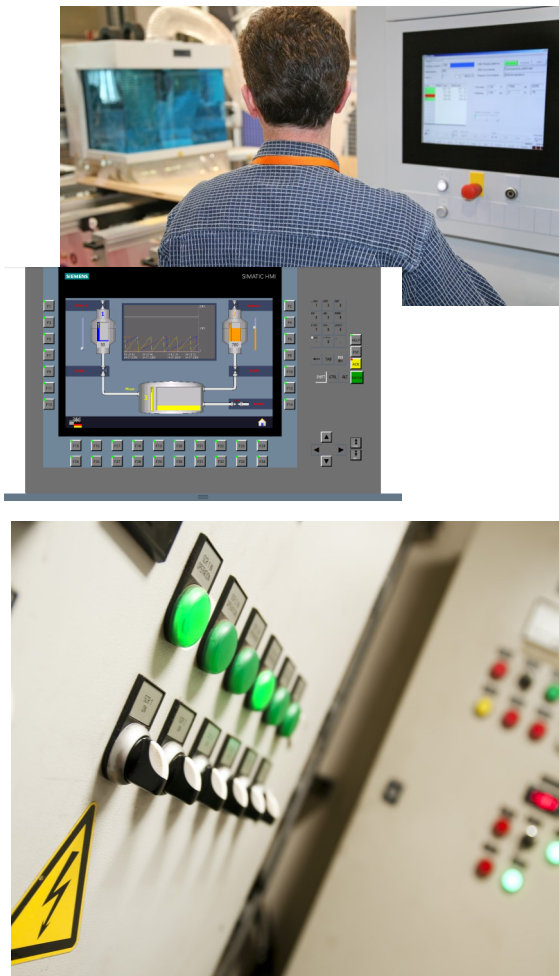
**WE ARE ACTIVE IN THE INDUSTRIAL AUTOMATION SECTOR,
WE DESIGN AND PRODUCE HARDWARE AND SOFTWARE
FOR CONTROL SYSTEMS WITH PLC LOGIC.
WE ARE AN IDEAL DESIGN PARTNER, WORKING WITH YOU TO SOLVE ELECTRICAL,
TECHNOLOGICAL AND SAFETY PROBLEMS
OF BOTH MACHINES AND SYSTEMS**

INDUSTRIAL AUTOMATION
ELECTRICAL PANELS
HARDWARE AND SOFTWARE
DEVELOPMENT
www.g2-automation.it
www.iotly.net



G2 DI GHIOLDI SRL
VIA CADUTI D. LIBERAZIONE, 55
UBOLDO (VA) - 21040 - ITALY
TEL. +39 2 96780783
FAX +39 2 96789658
E-MAIL automation@g2team.it





G2 Ghioldi Srl is a dynamic and projected into the future, always at the forefront in the design and construction of electrical panels for **industrial automation**.

The realization of human-machine interfaces and control and supervision systems in industrial environments has always been a fundamental component of **G2**'s activity, while the **PLC programming** is a real strong point of the **G2** automation department, with the development of applications for most of the PLC platforms on the market.

The hardware and software design is completely developed in-house by our engineers. Constantly updated and trained, they produce designs which conform to the current **IEC** international reference standards, as well as to the **Canadian CSA** and **American UL** standards (Certificate No.5001719 issued by Intertek).

G2 offers itself as an **ideal design partner** and works with the customer to solve all electrical, technological and safety problems of machines and systems.



SIEMENS

**Rockwell
Automation**
Allen-Bradley

**MITSUBISHI
ELECTRIC**



General Electric

**ePLAN[®]
electric8**

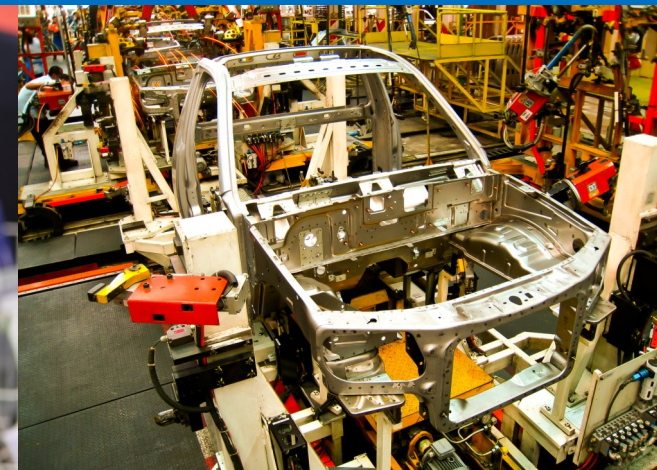


G2 has developed a **remote plant supervision platform** for industry 4.0, **iotly**.

It is a **Cloud**-based application for data collection and analysis that can be used by any computer and smart device.

iotly is completely **independent** from the hardware platform, from the specific and/or customised field terminals, it is multi-use with permission management and multilingual features.

This platform has a host of **applications** in many industrial sectors: automotive, thermal insulation, white appliances industry, renewable energies, biomedical applications, food, plastic, transport.



There are many important **competitive advantages** for companies of all sizes as well, including:

- **complete control of production**, through reliability indices in order to reduce product defects;
- verification and optimisation of energy and material **consumption**;
- control of the machine status and planning of **maintenance** operations in a predictive;
- use of services integrated with company;
- punctual transmission of information with notifications in real time and diagnostic and production **reports** by email.

iotly
smart factory

